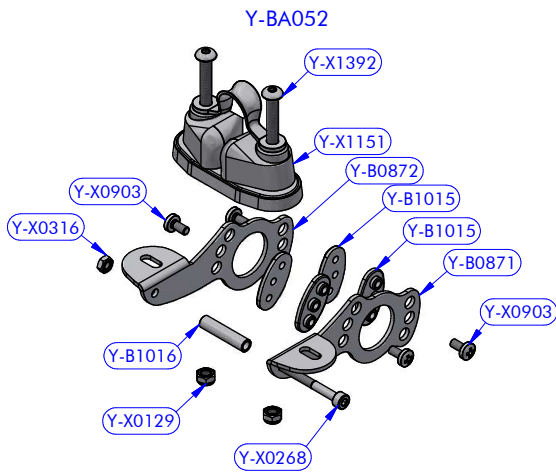


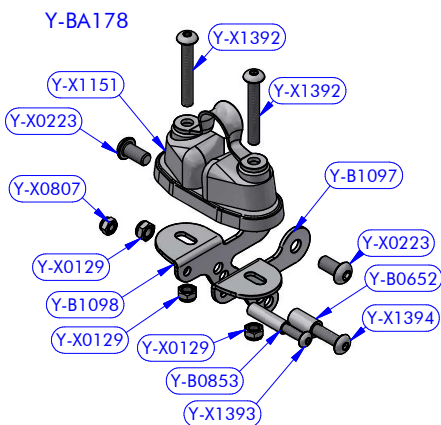
PART LIST 992.603

CODE	DESCRIPTION	MATERIAL	Q.TY
06016F	Sheave D060	Various	2
Y-B1099	Cheekplate	Aluminium	1
Y-BA052	Cam-cleat kit	Various	1
Y-BA106	Caps kit	Various	2
Y-BA177	Swivel head kit	Various	1
Y-BA178	Cam-cleat kit	S.Steel	1
Y-BA495	Sheave assy	Various	1
Y-BA499	Base module	Various	1
Y-X0301	S.steel washer	S.Steel	2



PART LIST Y-BA052

CODE	DESCRIPTION	MATERIAL	Q.TY
Y-B0871	Cam bracket	S.Steel	1
Y-B0872	Cam bracket	S.Steel	1
Y-B1015	Spacer	Plastic	4
Y-B1016	Pipe spacer	S.Steel	1
Y-X0129	Self-Locking nut	S.Steel	2
Y-X0268	Screw	S.Steel	1
Y-X0316	Standard nut	S.Steel	1
Y-X0903	Screw	S.Steel	4
Y-X1151	Cam-Cleat	S.Steel	1
Y-X1392	Screw	S.Steel	2



PART LIST Y-BA178

CODE	DESCRIPTION	MATERIAL	Q.TY
Y-B0652	Pipe spacer	S.Steel	1
Y-B0853	Pipe spacer	S.Steel	1
Y-B1097	Cam bracket	S.Steel	1
Y-B1098	Cam bracket	S.Steel	1
Y-X0129	Self-Locking nut	S.Steel	3
Y-X0223	Screw	S.Steel	2
Y-X0807	Self-Locking nut	S.Steel	1
Y-X1151	Cam-Cleat	S.Steel	1
Y-X1392	Screw	S.Steel	2
Y-X1393	Screw	S.Steel	1
Y-X1394	Screw	S.Steel	1

antal

Main system Block series F4/12 D060
Primary + Long head D06 L19,5 +
Cam Cleat+Block

DESCRIPTION

992.603

MODEL CODE

16/02/2023

DATE

00

REV.

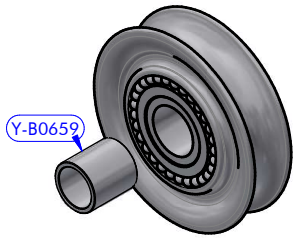
992-603

DWG N.

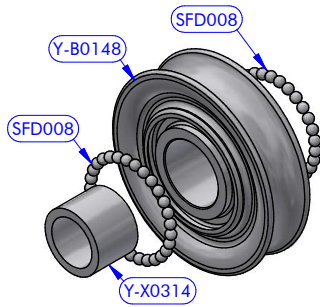
1 / 2

PG.

06016F



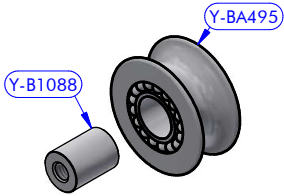
Y-BA492



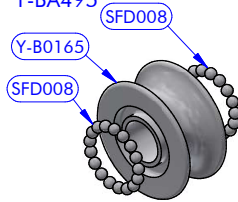
PART LIST 06016F			
CODE	DESCRIPTION	MATERIAL	Q.TY
Y-B0659	Pipe spacer	S.Steel	1
Y-BA492	Sheave assy	Various	1

PART LIST Y-BA492			
CODE	DESCRIPTION	MATERIAL	Q.TY
SFD008	Delrin ball	Plastic	58
Y-B0148	Resin	POM-C	1
Y-X0314	C.F. Bushing	Composite Fibre	1

03416M



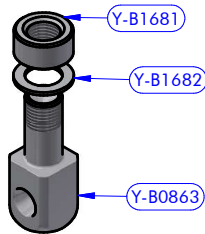
Y-BA495



PART LIST 03416M			
CODE	DESCRIPTION	MATERIAL	Q.TY
Y-B1088	Threaded pipe	S.Steel	1
Y-BA495	Sheave assy	Various	1

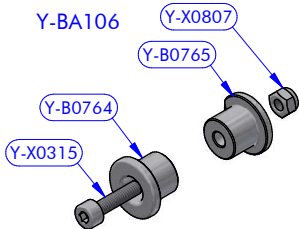
PART LIST Y-BA495			
CODE	DESCRIPTION	MATERIAL	Q.TY
SFD008	Delrin ball	Plastic	34
Y-B0165	Resin	POM-C	1

Y-BA177



PART LIST Y-BA177			
CODE	DESCRIPTION	MATERIAL	Q.TY
Y-B0863	Swivel head	S.Steel HR	1
Y-B1681	Nut	S.Steel HR	1
Y-B1682	Washer	Tufnol	1

Y-BA106



PART LIST Y-BA106			
CODE	DESCRIPTION	MATERIAL	Q.TY
Y-B0764	Cap	Aluminium	1
Y-B0765	Cap	Aluminium	1
Y-X0315	Screw	S.Steel	1
Y-X0807	Self-Locking nut	S.Steel	1



Main system Block series F4/12 D060
 Primary + Long head D06 L19,5 +
 Cam Cleat+Block

992.603

16/02/2023 00
 DATE REV.
 992-603 2 / 2
 DWG N. PG.