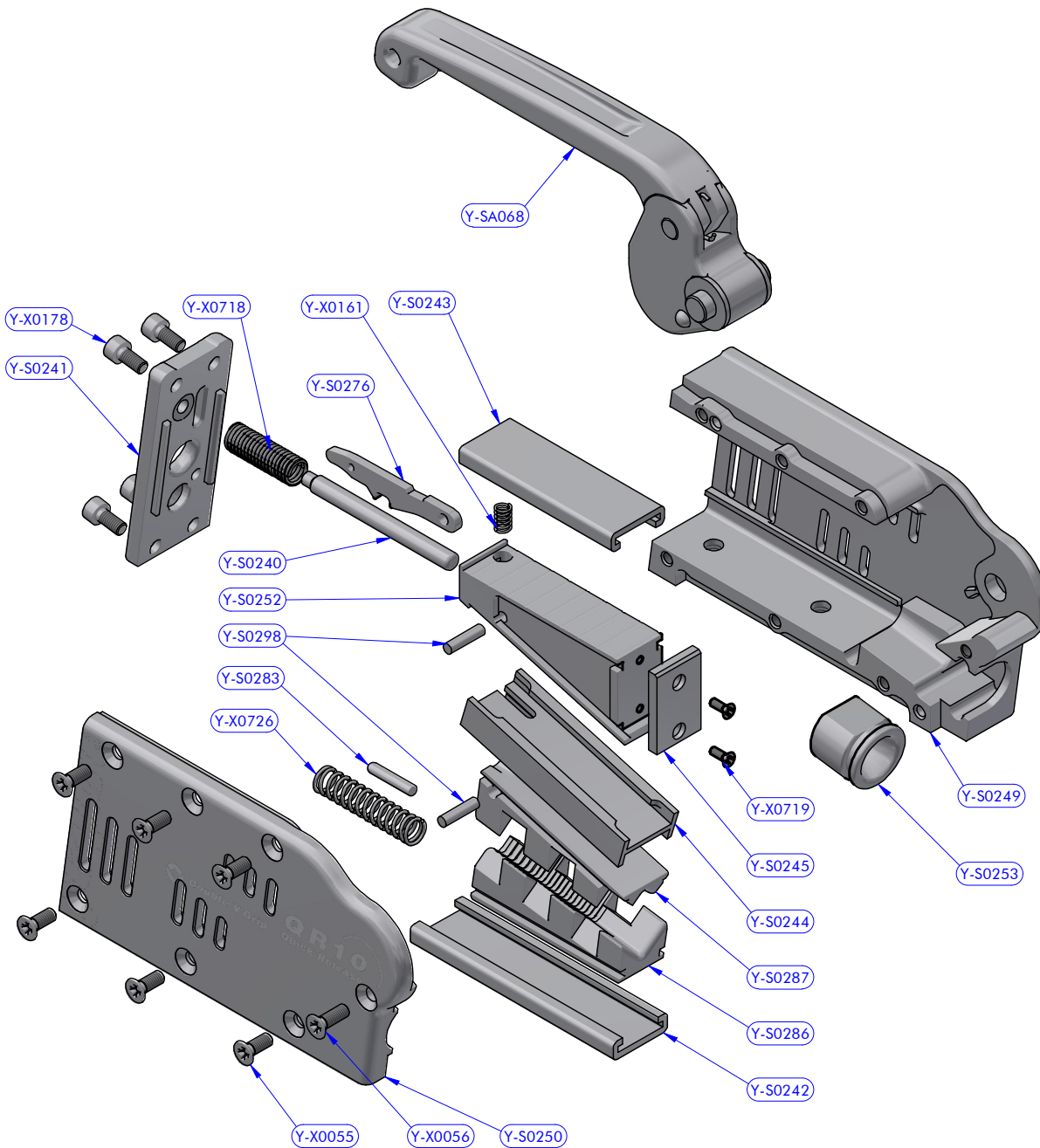


PART LIST			
CODE	DESCRIPTION	MATERIAL	Q.TY
Y-SA031	Common part assy		1
Y-SA057	Fixing screw kit	S.Steel	3



Cod. **Y-SA031**
Common part assy QR10

PART LIST - Y-SA031			
CODE	DESCRIPTION	MATERIAL	Q.TY
Y-S0240	Pin	S.Steel	1
Y-S0241	Rear cover	Aluminium	1
Y-S0242	Guide	Polietilene	1
Y-S0243	Guide	Polietilene	1
Y-S0244	Insert	Polietilene	1
Y-S0245		Composite fibre	1
Y-S0249	Body	Aluminium	1
Y-S0250	Cheekplate	Aluminium	1
Y-S0252	Wedge	Aluminium	1
Y-S0253	Ring	Aluminium	1
Y-S0276	Command lever	S.Steel	1
Y-S0283	Free line mark	Aluminium	1
Y-S0286	Lower jaw	Aluminium	1
Y-S0287	Upper jaw	Aluminium	1
Y-S0298	Cylinder pin	S.Steel	2
Y-SA068	Lever assy	Various	1
Y-X0055	Screw	S.Steel	6
Y-X0056	Screw	S.Steel	1
Y-X0178	Screw	S.Steel	4
Y-X0718	Compression spring	S.Steel	1
Y-X0719	Screw	S.Steel	2
Y-X0726	Compression spring	S.Steel	1
Y-X0161	Compression spring	S.Steel	1



Clutch QR10 Standard

506.101
MODEL CODE

23/11/2018
DATE
18032723
DWG N.
REV.
2 / 2
PG.

DESCRIPTION

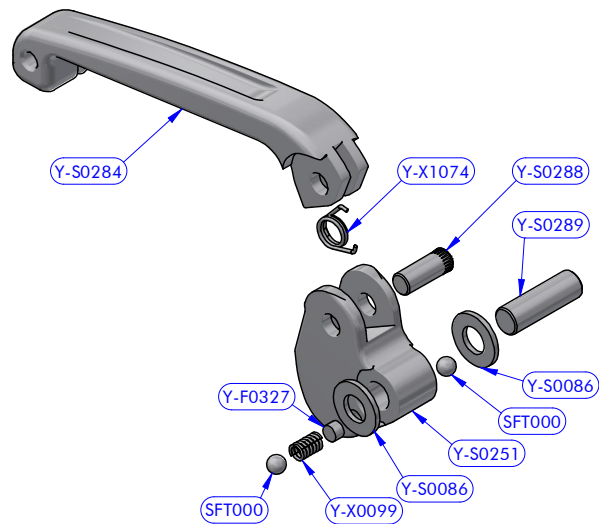
MODEL CODE

DATE

REV.

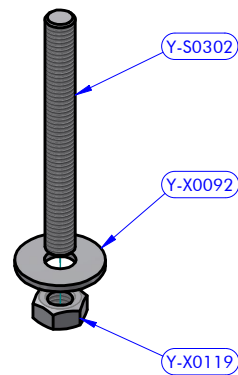
DWG N.

PG.



Cod.Y-SA068
Lever assy

PART LIST			
CODE	DESCRIPTION	MATERIAL	Q.TY
Y-S0284	Lever	Aluminium	1
Y-S0251	Cam	Aluminium	1
Y-X1074	Torsion spring	S.Steel	1
Y-S0288	Cylinder pin	S.Steel	1
Y-S0086	Resin washer	POM-C	2
SFT000	Torlon ball	Torlon	2
Y-X0099	Compression spring	S.Steel	1
Y-S0289	Cylinder pin	S.Steel	1
Y-F0327	Cylinder pin	Teflon	1



Cod.Y-SA057
Fixing screw kit Stud M08 x 075 + 1 Washer A4 + Nut

PART LIST			
CODE	DESCRIPTION	MATERIAL	Q.TY
Y-X0092	S.Steel washer	S.Steel	1
Y-X0119	Standard nut	S.Steel	1
Y-S0302	Stud	S.Steel	1