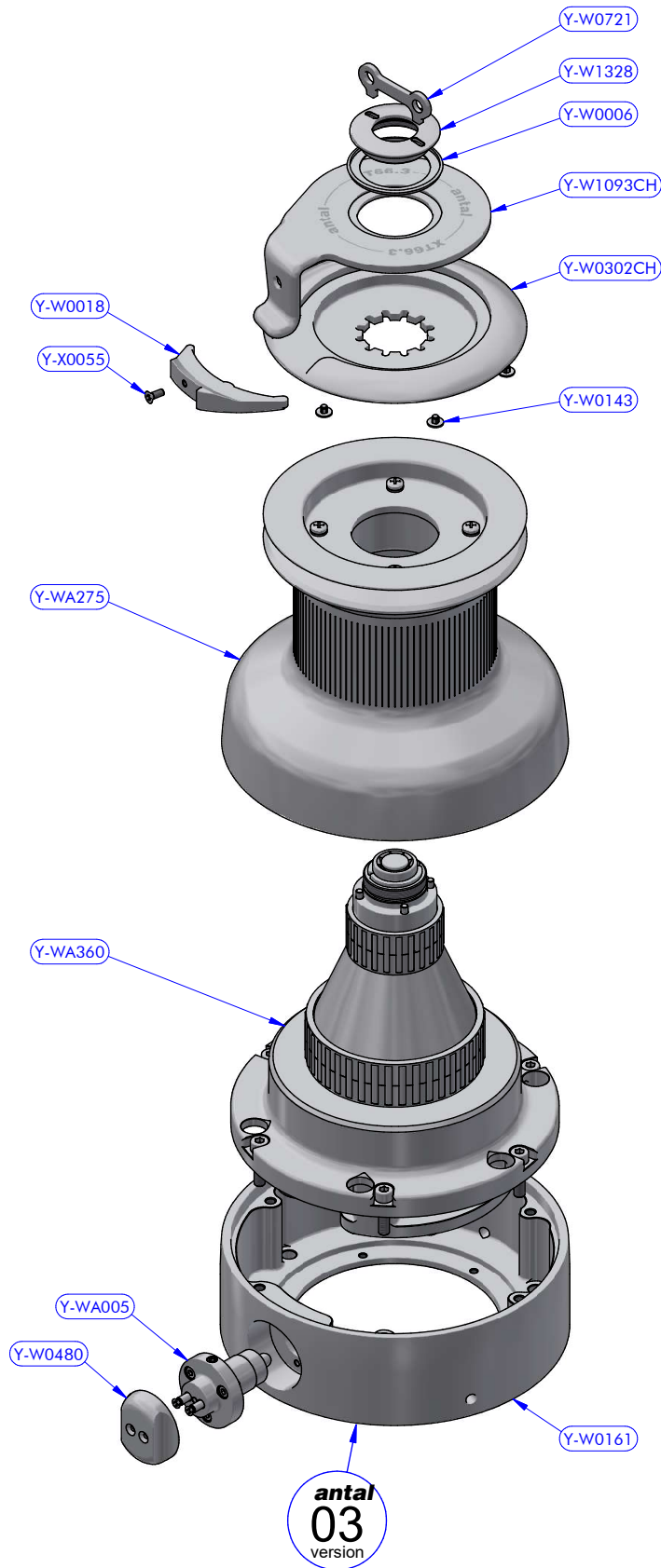
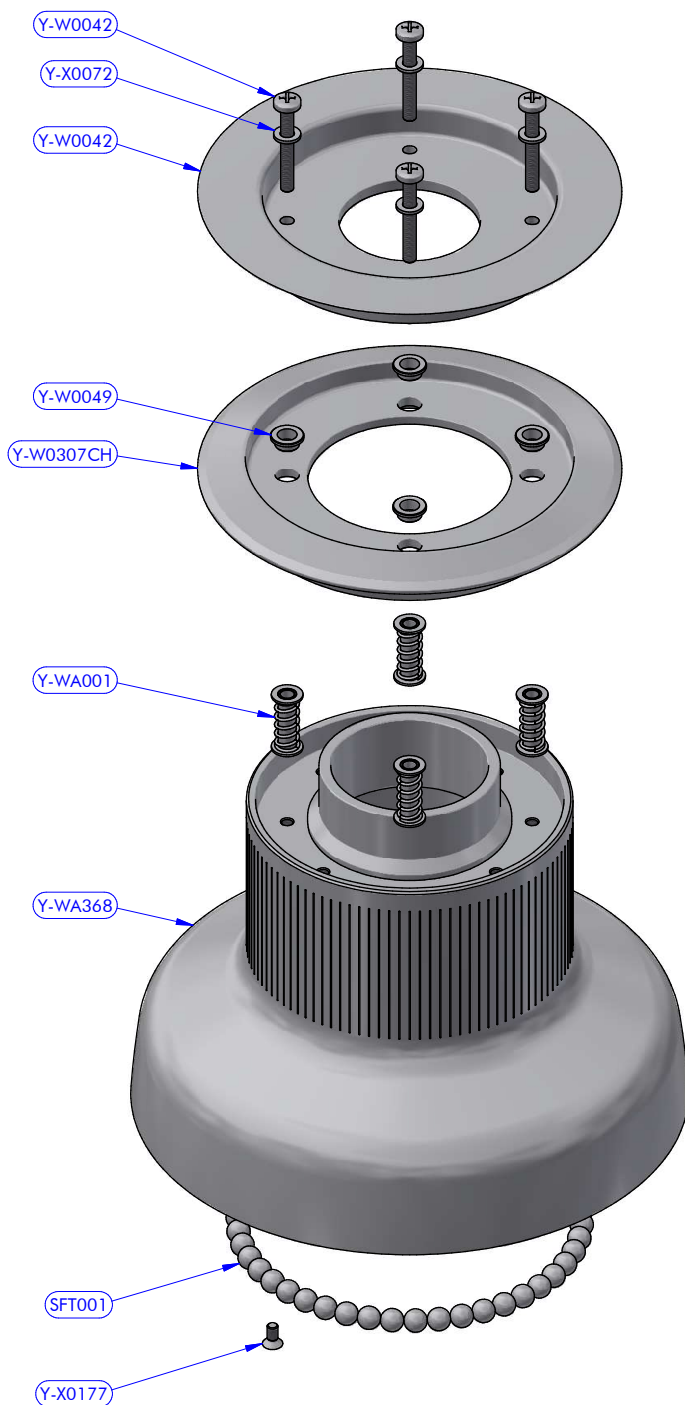


PART LIST			
CODE	DESCRIPTION	MATERIAL	Q.TY
XT66.3CHX	Winch	Various	1
Y-WA372	Flange + Disengagement box + Gearbox assy	Various	1

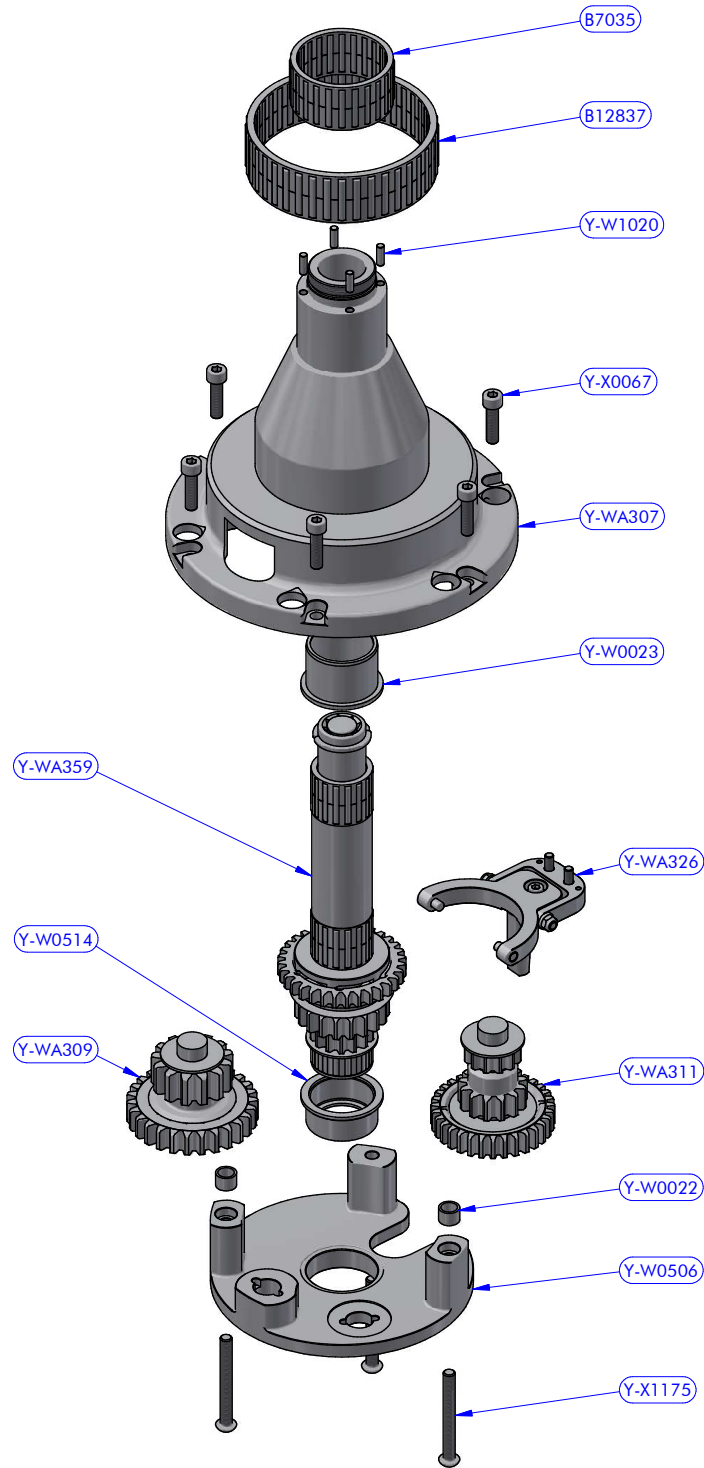
MOTOR		
CODE	DESCRIPTION	Q.TY
Y-W0420	1500W 12V	1
Y-W0421	1500W 24V	1



XT66.3CHX - PART LIST			
CODE	DESCRIPTION	MATERIAL	Q.TY
Y-W0006	Upper ring washer	Plastic	1
Y-W0018	Stripper	Plastic	1
Y-W0143	ST plug	Plastic	6
Y-W0161	Skirt	Aluminium	1
Y-W0302CH	Upper disk	Chromed brass	1
Y-W0480	Button	Aluminium	1
Y-W0721	Opening tool	S.Steel	1
Y-W1093CH	Self-tailing arm	Chromed brass	1
Y-W1328	Upper cap	S.Steel	1
Y-WA005	3 speed button kit	Various	1
Y-WA275	Drum	Various	1
Y-WA360	Base + Gears assy	Various	1
Y-X0055	Screw	S.Steel	1

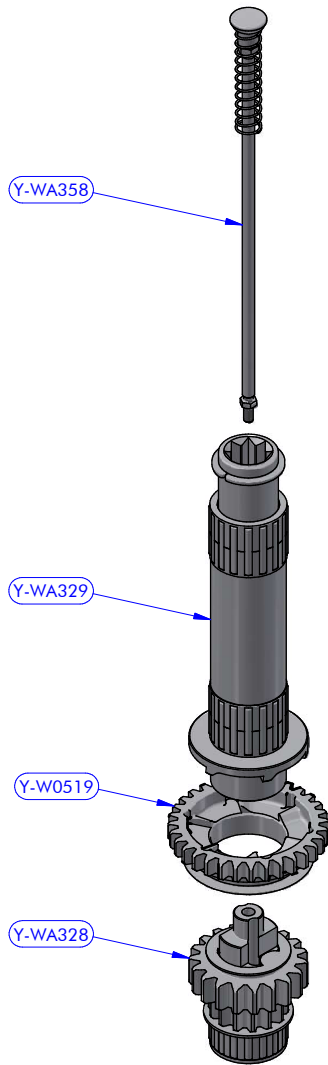


Y-WA275 - PART LIST			
CODE	DESCRIPTION	MATERIAL	Q.TY
SFT001	Torlon ball	Torlon	46
Y-W0042	ST central disk	Aluminium	1
Y-W0049	ST disk bush	Plastic	4
Y-W0307CH	ST lower disk	Chromed brass	1
Y-WA001	ST-spring assy	S.Steel	4
Y-WA368	Drum	Various	1
Y-X0071	Screw	S.Steel	4
Y-X0072	S.Steel washer	S.Steel	4
Y-X0177	Screw	S.Steel	1

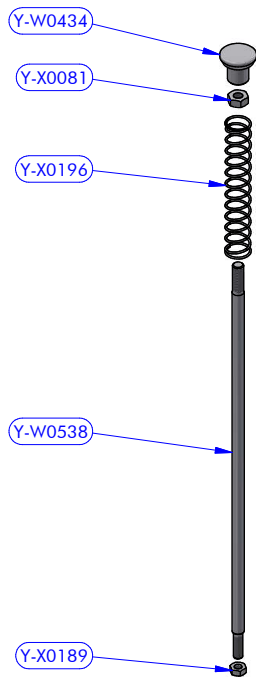


Y-WA360 - PART LIST

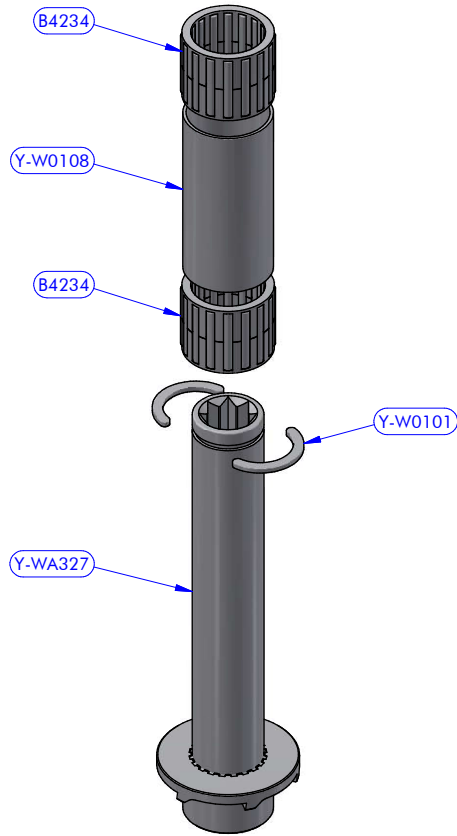
CODE	DESCRIPTION	MATERIAL	Q.TY
B7035	Roller bearing	Plastic / S.Steel	1
B12837	Roller bearing	Plastic / S.Steel	1
Y-W0022	Pipe spacer	S.Steel	2
Y-W0023	Bearing track	Plastic / S.Steel	1
Y-W0506	Gear base	Aluminium	1
Y-W0514	Bearing track	Plastic / S.Steel	1
Y-W1020	Cylinder pin	S.Steel	4
Y-WA307	Base + Stem	Various	1
Y-WA309	Gears kit	Various	1
Y-WA311	Gears kit	Various	1
Y-WA326	3 speed fork lever kit	Various	1
Y-WA359	Main shaft assy	Various	1
Y-X0067	Screw	S.Steel	6
Y-X1175	Screw	S.Steel	3



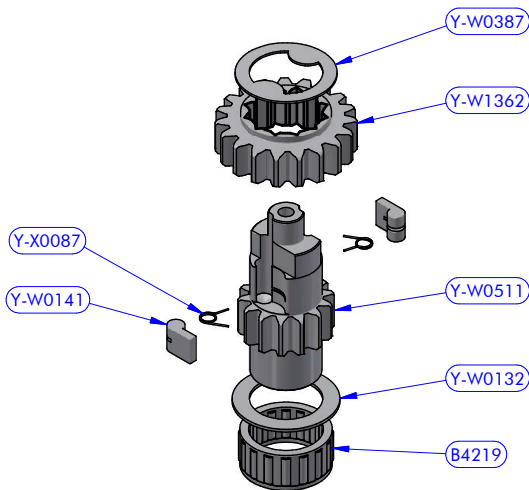
Y-WA359 - PART LIST			
CODE	DESCRIPTION	MATERIAL	Q.TY
Y-W0519	Gear "A3"	Bronze	1
Y-WA328	Main shaft assy	Various	1
Y-WA329	Main shaft assy	Various	1
Y-WA358	Disengagement rod kit	S.Steel	1



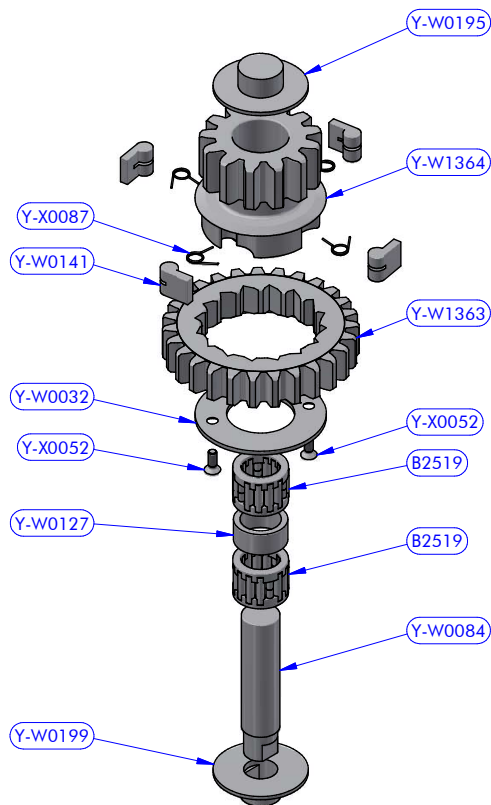
Y-WA358 - PART LIST			
CODE	DESCRIPTION	MATERIAL	Q.TY
Y-W0434	Disengagement rod head	S.Steel	1
Y-W0538	Disengagement rod	S.Steel	1
Y-X0081	Standard nut	S.Steel	1
Y-X0189	Standard nut	S.Steel	1
Y-X0196	Compression spring	S.Steel	1



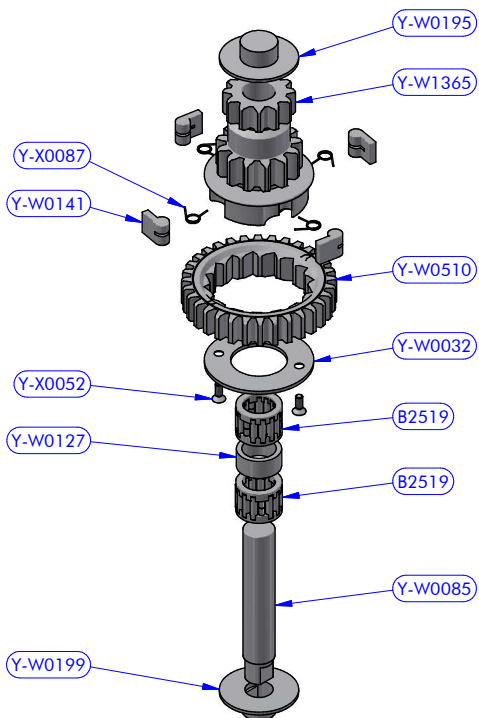
Y-WA329 - PART LIST			
CODE	DESCRIPTION	MATERIAL	Q.TY
B4234	Roller bearing	Plastic / S.Steel	2
Y-W0101	Half-ring	Brass	2
Y-W0108	Pipe spacer	Plastic	1
Y-WA327	Main shaft + Tow	S.Steel / Bronze	1



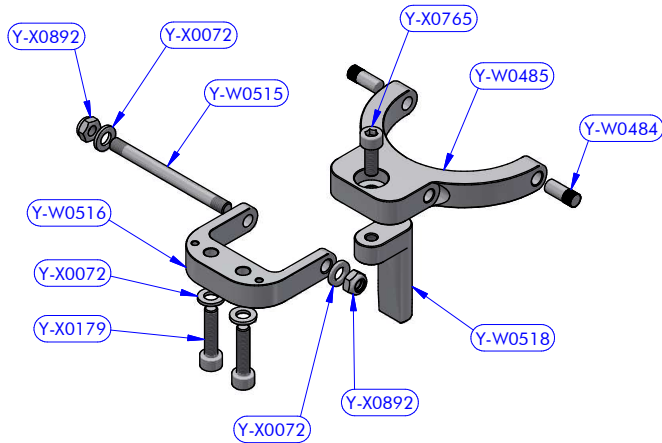
Y-WA328 - PART LIST			
CODE	DESCRIPTION	MATERIAL	Q.TY
B4219	Roller bearing	Plastic / S.Steel	1
Y-W0132	S.Steel washer	S.Steel	1
Y-W0141	Pawl	S.Steel	2
Y-W0387	S.Steel washer	S.Steel	1
Y-W0511	Lower shaft	S.Steel	1
Y-W1362	Gear "A2"	Bronze	1
Y-X0087	Torsion spring	S.Steel	2



Y-WA309 - PART LIST			
CODE	DESCRIPTION	MATERIAL	Q.TY
B2519	Roller bearing	Plastic / S.Steel	2
Y-W0032	Gear ring	S.Steel	1
Y-W0084	Gear axis	S.Steel HR	1
Y-W0127	Pipe spacer	POM-C	1
Y-W0141	Pawl	S.Steel	4
Y-W0195	Gear upper washer	Plastic	1
Y-W0199	Gear lower washer	Plastic	1
Y-W1363	Gear "B1"	Bronze	1
Y-W1364	Gear "B2"	Bronze	1
Y-X0052	Screw	S.Steel	2
Y-X0087	Torsion spring	S.Steel	4

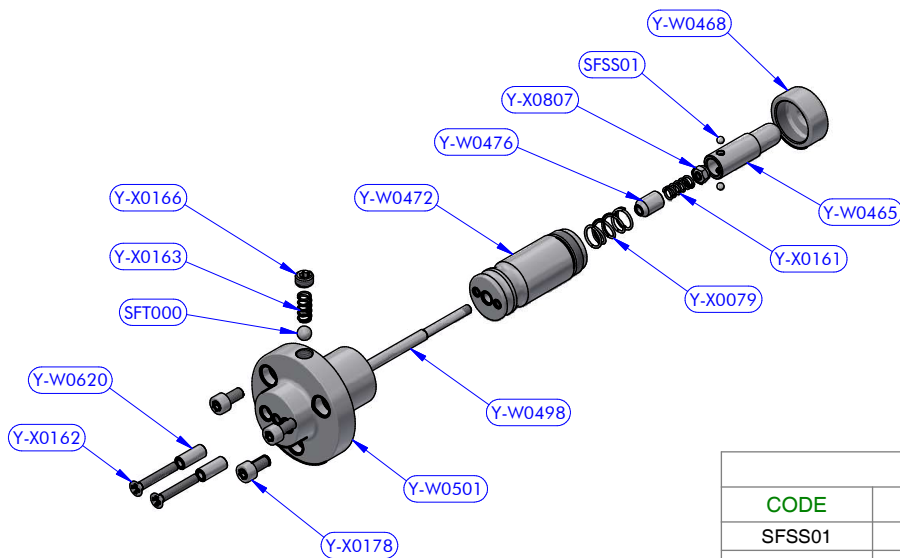


Y-WA311 - PART LIST			
CODE	DESCRIPTION	MATERIAL	Q.TY
B2519	Roller bearing	Plastic / S.Steel	2
Y-W0032	Gear ring	S.Steel	1
Y-W0085	Gear axis	S.Steel HR	1
Y-W0127	Pipe spacer	POM-C	1
Y-W0141	Pawl	S.Steel	4
Y-W0195	Gear upper washer	Plastic	1
Y-W0199	Gear lower washer	Plastic	1
Y-W0510	Gear "D1"	Bronze	1
Y-W1365	Dual gear "D2 / D3"	Bronze	1
Y-X0052	Screw	S.Steel	2
Y-X0087	Torsion spring	S.Steel	4



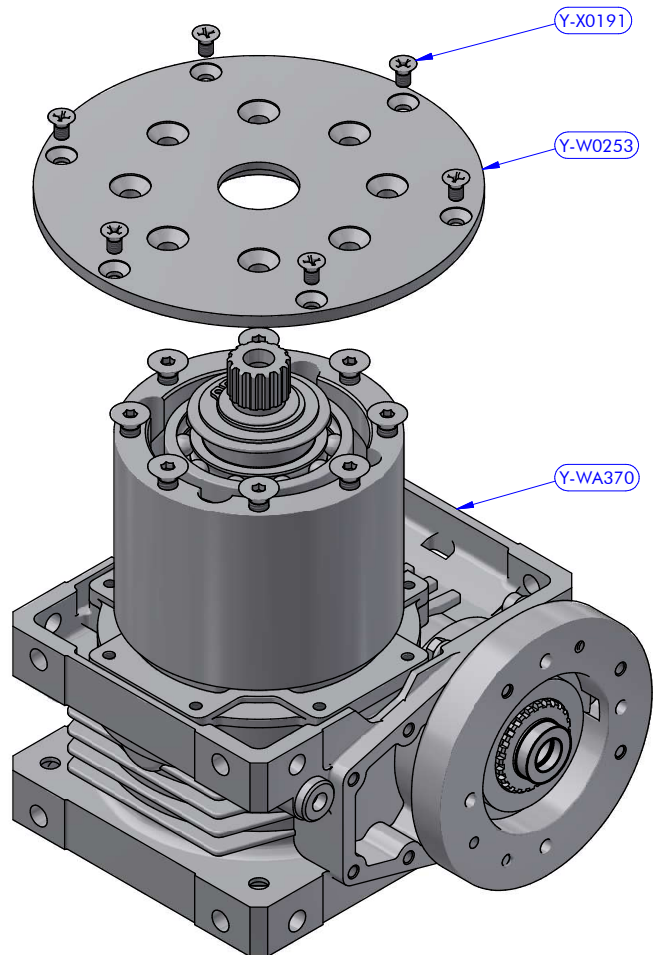
Y-WA326 - PART LIST

CODE	DESCRIPTION	MATERIAL	Q.TY
Y-W0484	Fork roll pin	S.Steel	2
Y-W0485	Fork	Aluminium	1
Y-W0515	Threaded axis	S.Steel	1
Y-W0516	Fork stand	Aluminium	1
Y-W0518	Fork lever	Aluminium	1
Y-X0072	S.Steel washer	S.Steel	4
Y-X0179	Screw	S.Steel	2
Y-X0765	Screw	S.Steel	1
Y-X0892	Self-Locking nut	S.Steel	2

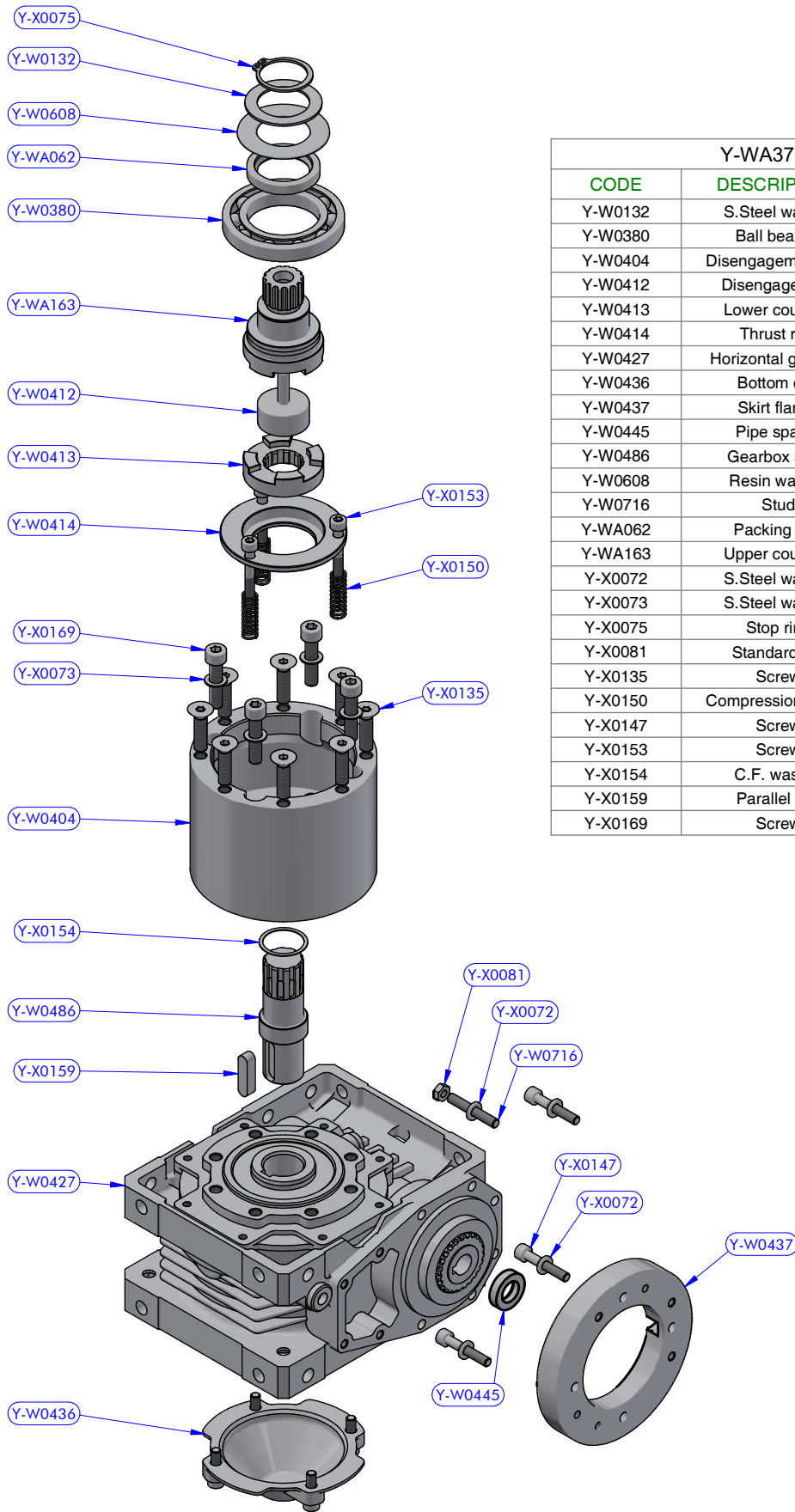


Y-WA005 - PART LIST

CODE	DESCRIPTION	MATERIAL	Q.TY
SFSS01	S.Steel ball	S.Steel	2
SFT000	Torlon ball	Torlon	1
Y-W0465	Button tip	S.Steel	1
Y-W0468	Sliding cylinder cap	S.Steel	1
Y-W0472	Sliding cylinder	S.Steel	1
Y-W0476	Button slider	S.Steel	1
Y-W0498	Button rod	S.Steel	1
Y-W0501	Button support	Aluminium	1
Y-W0620	Pipe spacer	S.Steel	2
Y-X0079	Compression spring	S.Steel	1
Y-X0161	Compression spring	S.Steel	1
Y-X0162	Screw	S.Steel	2
Y-X0163	Compression spring	S.Steel	1
Y-X0166	Flat point set screw	S.Steel	1
Y-X0178	Screw	S.Steel	3
Y-X0807	Self-Locking nut	S.Steel	1



Y-WA372 - PART LIST			
CODE	DESCRIPTION	MATERIAL	Q.TY
Y-W0253	Skirt flange	Aluminium	1
Y-WA370	Disengagement box + Gearbox assy	Various	1
Y-X0191	Screw	S.Steel	6



Y-WA370 - PART LIST

CODE	DESCRIPTION	MATERIAL	Q.TY
Y-W0132	S.Steel washer	S.Steel	1
Y-W0380	Ball bearing	S.Steel	1
Y-W0404	Disengagement box	Aluminium	1
Y-W0412	Disengagement	Bronze	1
Y-W0413	Lower coupling	S.Steel	1
Y-W0414	Thrust ring	Bronze	1
Y-W0427	Horizontal gearbox	Various	1
Y-W0436	Bottom cap	Plastic	1
Y-W0437	Skirt flange	Aluminium	1
Y-W0445	Pipe spacer	POM-C	1
Y-W0486	Gearbox shaft	Bronze	1
Y-W0608	Resin washer	Resin	1
Y-W0716	Stud	S.Steel	1
Y-WA062	Packing ring	Rubber	1
Y-WA163	Upper coupling	Various	1
Y-X0072	S.Steel washer	S.Steel	4
Y-X0073	S.Steel washer	S.Steel	4
Y-X0075	Stop ring	S.Steel	1
Y-X0081	Standard nut	S.Steel	1
Y-X0135	Screw	S.Steel	8
Y-X0150	Compression spring	S.Steel	3
Y-X0147	Screw	S.Steel	3
Y-X0153	Screw	S.Steel	3
Y-X0154	C.F. washer	Tufnol	1
Y-X0159	Parallel key	S.Steel	1
Y-X0169	Screw	S.Steel	4